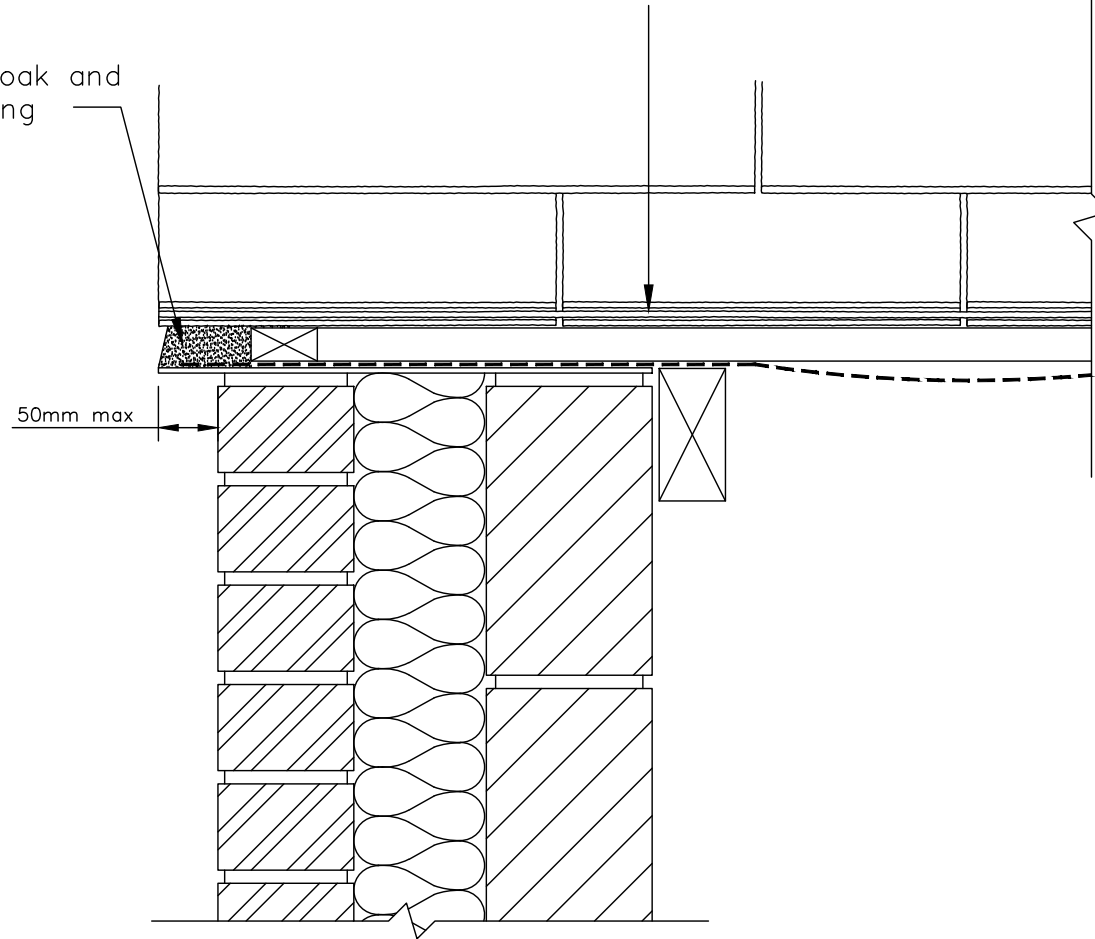


Fixing in accordance with the  
manufacturers printed instructions,  
BS5534: 2014 + A2: 2018, BS8000 part 6  
2013 and H62/210 and 275

Slate undercloak and  
mortar pointing

50mm max



- 1: Grade slates into 3 or 4 groups of equal thickness.
- 2: Lay thicker slates at eaves, thinner towards the ridge.
- 3: Lay slates of equal thickness in the same course.
- 4: Sort slates in each group so that thin end of slates will be towards the ridge.
- 5: Hole slates from the rear.

CEMBRIT LIMITED  
VERGE WITH CEMENT POINTING TYPICAL DETAIL  
508x254 GLENDYNE (NATURAL SLATE)  
DRG No. 510 H62/105, 280 and 445